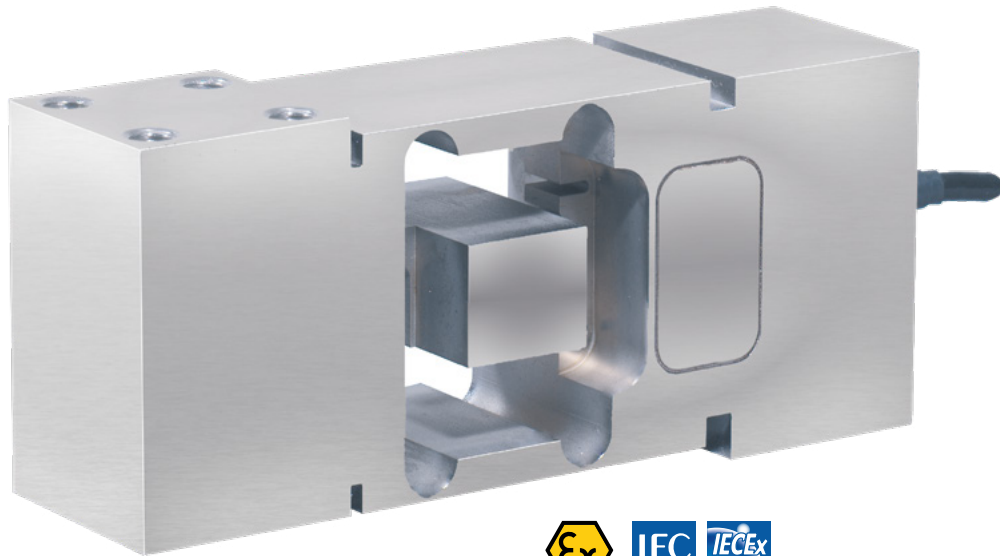


Single Point Load Cell AK-300 with a Rated Load of 120 ... 300 kg

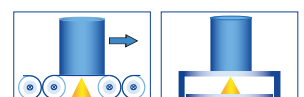


Performance Features

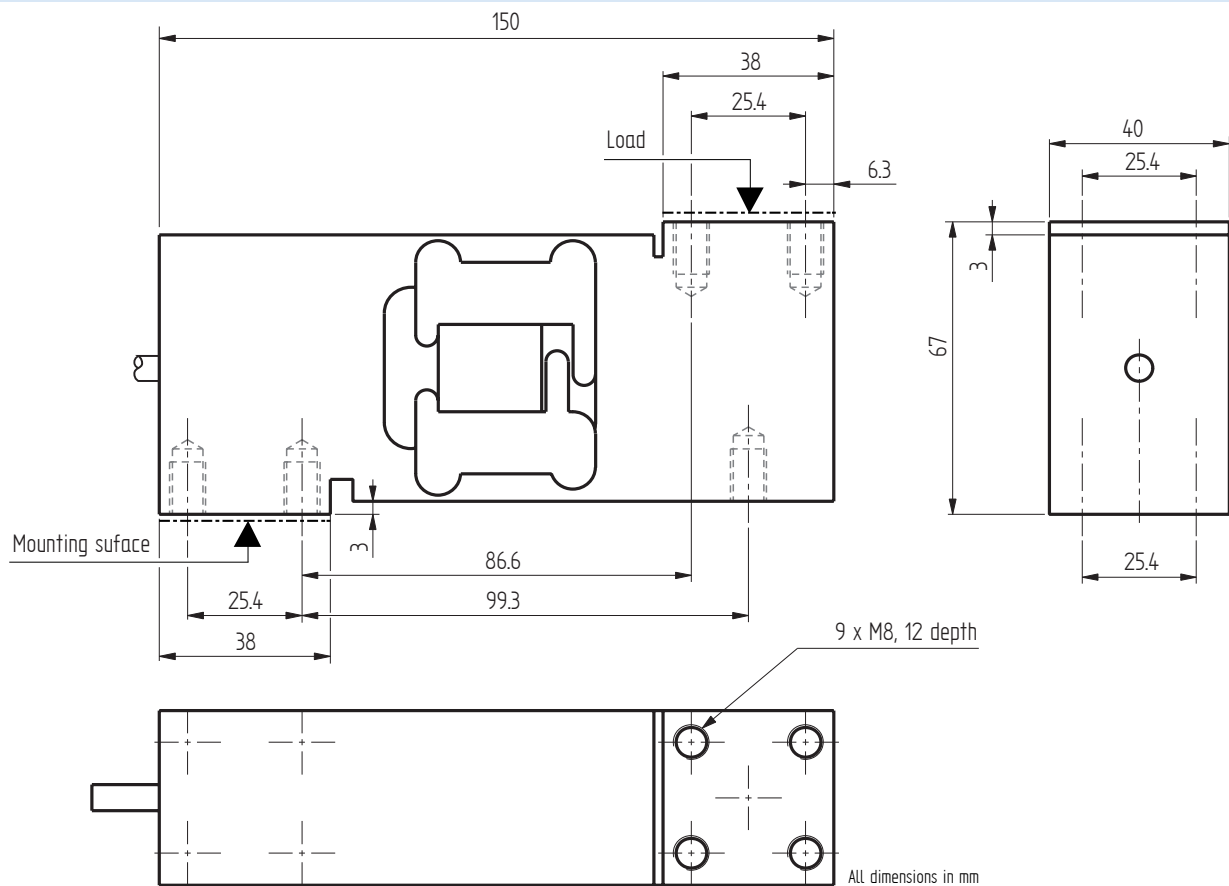
- Stainless steel single point load cell
- 3000d OIML R60 and 5000d NETP approved
- Level of protection: IP68
- Designed for platforms of maximum dimensions 600 mm x 600 mm (off-center load compensated)
- Ideally suited for single point scales and dosing scales
- ATEX 2014/34/EU version for hazardous area (option)

Application

- Food industry
- Chemical/pharmaceutical industry
- Dosing equipment in humid and corrosive environments



Dimensions in mm



Warning

AK120 and 300 kg installation requires mounting hardware with a minimum hardness of 53 HRC and screws of class 12.9

Article-No.	Version	Rated Load [kg]
109681	C3 12e	120
109682	C3 12e	300

Connection Assignment

Electrical Connection

Function	Wire Color
Excitation (+)	Brown 
Signal (+)	Yellow 
Signal (-)	White 
Excitation (-)	Green 
Sensing (+)	Gray 
Sensing (-)	Pink 

Technical Data

Type	AK	
Version		C3 12e
Rated load E	kg	120; 300
Maximum load for approved weighing E_{max}	kg	120.3; 300.3
Accuracy class OIML R60		C3
Maximum numbers of load cell intervals n_{max}	d OIML	3000
Minimum verification interval v_{min}	kg	E/12000
Creep division factor $Z = E_{max}/2 \times DR$		3000
Combined error	% E	±0.017
Temperature coefficient of zero signal	% E/°C	±0.0012
Temperature coefficient of characteristic value	% E/°C	±0.0014
Load creep d_{cr, F} in 30 min.	% E	±0.025
Zero balance	% E	±10
Rated output at E C_{nom}	mV/V	2 ±10 %
Rated range of excitation voltage B_{U, nom}	V	1 ... 15
Input resistance R_e	Ω	385 ±20
Output resistance R_a	Ω	350 ±5
Insulation resistance R_{is}	MΩ/50V	5000
Electrical connection		Cable, PVC, 3 m
Rated temperature range B_{T, nom}	°C	-10 ... 40
Operating temperature range B_{T, G}	°C	-20 ... 60
Limit load E_{lim}	% E _{max}	150
Breaking load E_b	% E _{max}	200
Tightening torque	Nm	40
Maximum platform dimension	mm	600 x 600
Level of protection		IP68
Material		Stainless steel
Weight		2.2

Options

Article-No.	Description
111735	Protective coating
107798	ATEX 2014/34/EU, IECEx: ex II 1 G/D, Ex ia IIC T6 Ga, Ex ia IIIC T80 °C Da, IP6X, -20 °C < Ta < +60 °C (zones gaz 0/1/2, dust 20/21/22)
115049	ATEX 2014/34/EU, IECEx: ex II 1 D, Ex ta IIIC T125 °C Da, IP6X, -20 °C < Ta < +60 °C (zones dust 20/21/22)
115048	ATEX 2014/34/EU, IECEx: ex II 3 G, Ex nA IIC T6 Gc, -20 °C < Ta < +60 °C (zone gaz 2)

Accessories

Electrical Connection

Article-No.	Description
10323	Male cable connector KS6 (6-pin, Series 581) incl. mounting
10320	Male cable connector KSSH15 (15-pin) incl. mounting
43418	Input connector ZA9612FS (ALMEMO) incl. sensor mounting and connector calibration
49205	Input connector ZKD712FS (ALMEMO 202) incl. sensor mounting and connector calibration

Accessories (continued)

Weighing Electronics

ALCJB-A	CPJ/CPJ2S	IPE50 Panel
 The image shows a white plastic terminal block with a central grey section. It has two rows of screw terminals on the front and two rows of green PCB headers on the back. The top cover is partially open, revealing the internal wiring.	 The image shows a green plastic terminal block with a vertical orientation. It has a single row of screw terminals on the front and a green PCB header on the back.	 The image shows a blue and black industrial panel meter. It has a red LED display showing '30.000'. Below the display are several buttons and a small indicator light. The panel is mounted on a black base.

Further suitable accessories you can find on our homepage under:

https://www.lorenz-messtechnik.de/english/products/lc_weighing-electronics.php