

## Single Point Load Cell AG with a Rated Load of 2.5 kg



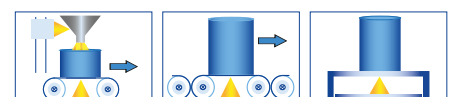
Data sheet

### Performance Features

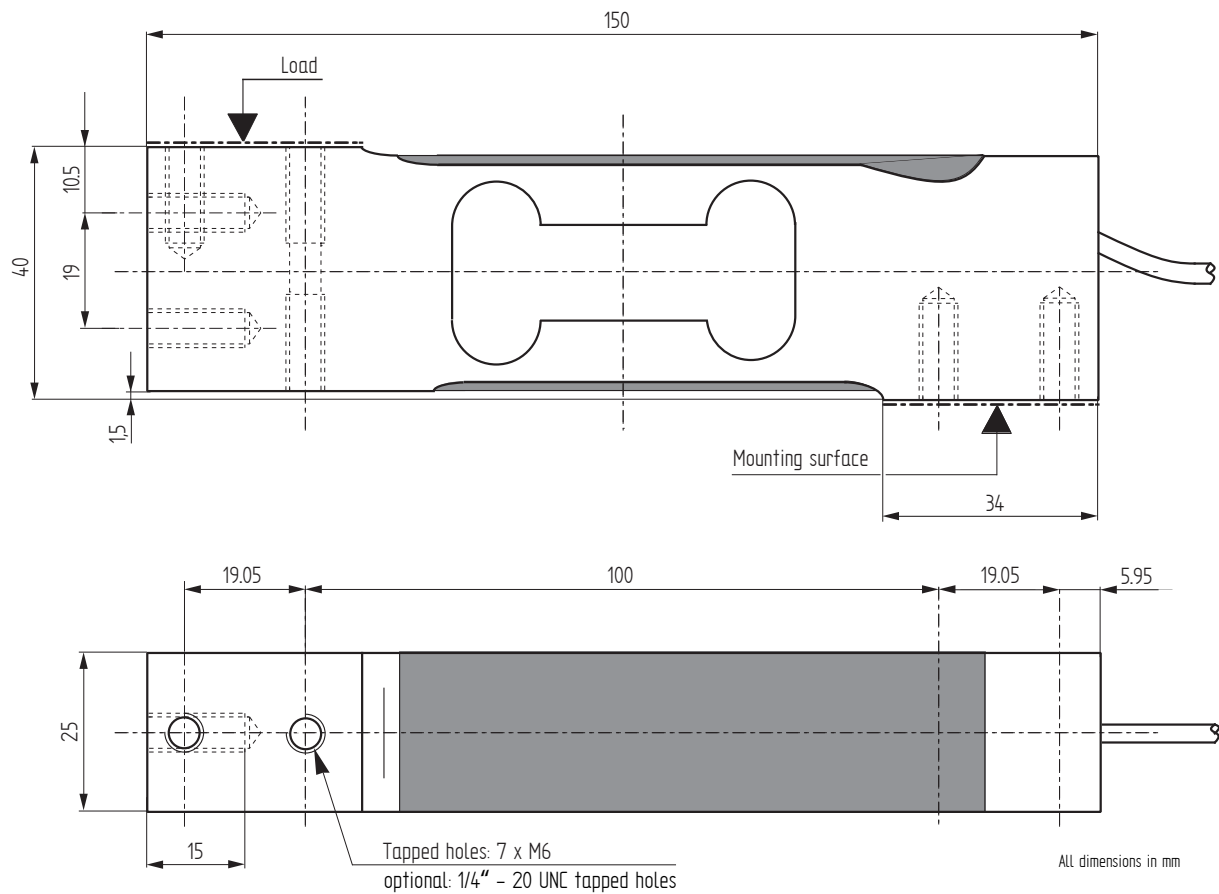
- Aluminum single point load cell
- Approved up to 2000d OIML R60
- Level of protection: IP65
- Designed for platforms of maximum dimensions
- 200 mm x 200 mm (off-center load compensated)
- Ideal for scales with low capacity and force measurement of small forces
- Available with 1/4" - 20 UNC tapped holes (option)
- ATEX 2014/34/EU version for hazardous area (option)

### Application

- Food industry
- Coal and steel industry
- Chemical/pharmaceutical industry
- Waste management/recycling
- Packaging technology



## Dimensions in mm



Article-No.	Version	Rated Load [kg]
101571	C2 3e	2,5

## Connection Assignment

### Electrical Connection

Function	Wire Color
Excitation (+)	Brown ●
Signal (+)	Yellow ●
Signal (-)	White ○
Excitation (-)	Green ●
Sensing (+)	Gray ●
Sensing (-)	Pink ●

## Technical Data

Type	AG	
Version		C2 3e
Rated load <b>E</b>	kg	2.5
Maximum load for approved weighing $E_{max}$	kg	3.125
Accuracy class OIML R60		C2
Maximum numbers of load cell intervals $n_{max}$	d OIML	2000
Minimum verification interval $v_{min}$	g	1
Creep division factor $Z = E_{max}/2 \times DR$		2000
Combined error	% E	±0.025
Temperature coefficient of zero signal	% E/°C	±0.007
Temperature coefficient of characteristic value	% E/°C	±0.0014
Load creep $d_{cr, F}$ in 30 min.	% E	±0.025
Zero balance	% E	±10
Rated characteristic value $C_{nom}$	mV/V	2 ±10 %
Rated range of excitation voltage $B_{U, nom}$	V	1 ... 15
Input resistance $R_e$	Ω	410 ±15
Output resistance $R_a$	Ω	350 ±5
Insulation resistance $R_{is}$	MΩ/50V	2000
Electrical connection		Cable, PVC, 3 m
Rated temperature range $B_{T, nom}$	°C	-10 ... 40
Operating temperature range $B_{T, G}$	°C	-20 ... 60
Limit load $E_{lim}$	% $E_{max}$	150
Breaking load $E_b$	% $E_{max}$	200
Tightening torque	Nm	6
Maximum platform dimension	mm	200 x 200
Level of protection		IP65
Material		Aluminum
Weight	kg	0.2

## Options

Article-No.	Description
111735	Protective coating
107798	ATEX 2014/34/EU, IECEx: ex II 1 G/D, Ex ia IIC T6 Ga, Ex ia IIIC T80 °C Da, IP6X, -20 °C < Ta < +60 °C (zones gaz 0/1/2, dust 20/21/22)
115049	ATEX 2014/34/EU, IECEx: ex II 1 D, Ex ta IIIC T125 °C Da, IP6X, -20 °C < Ta < +60 °C (zones dust 20/21/22)
115048	ATEX 2014/34/EU, IECEx: ex II 3 G, Ex nA IIC T6 Gc, -20 °C < Ta < +60 °C (zone gaz 2)
-	Marking FACTORY MUTUAL (FM): I.S., CL I, II, III / DIV 1 / GP ABCDEFG N.I., CL I, II, III / DIV 2 / GP ABCDEFG; NIFW

## Accessories

### Electrical Connection

Article-No.	Description
10323	Male cable connector KS6 (6-pin, Series 581) incl. mounting
10320	Male cable connector KSSH15 (15-pin) incl. mounting
43418	Input connector ZA9612FS (ALMEMO) incl. sensor mounting and connector calibration
49205	Input connector ZKD712FS (ALMEMO 202) incl. sensor mounting and connector calibration

## Accessories (continued)

### Weighing Electronics

ALCJB-A	CPJ/CPJ2S	IPE50 Panel
 The image shows a white plastic terminal block with a central grey section. It has two rows of screw terminals on the front and two rows of green PCB headers on the back. The top cover is partially open, revealing the internal wiring and components.	 The image shows a green plastic terminal block with a vertical orientation. It has a single row of screw terminals on the front and a green PCB header on the back. The model number 'CPJ' is printed on the front.	 The image shows a black and blue industrial panel meter. It has a red LED display showing '30.000'. Below the display are several buttons and indicators. The model number 'IPE50' is visible on the bottom right.

Further suitable accessories you can find on our homepage under:

[https://www.lorenz-messtechnik.de/english/products/lc\\_weighing-electronics.php](https://www.lorenz-messtechnik.de/english/products/lc_weighing-electronics.php)